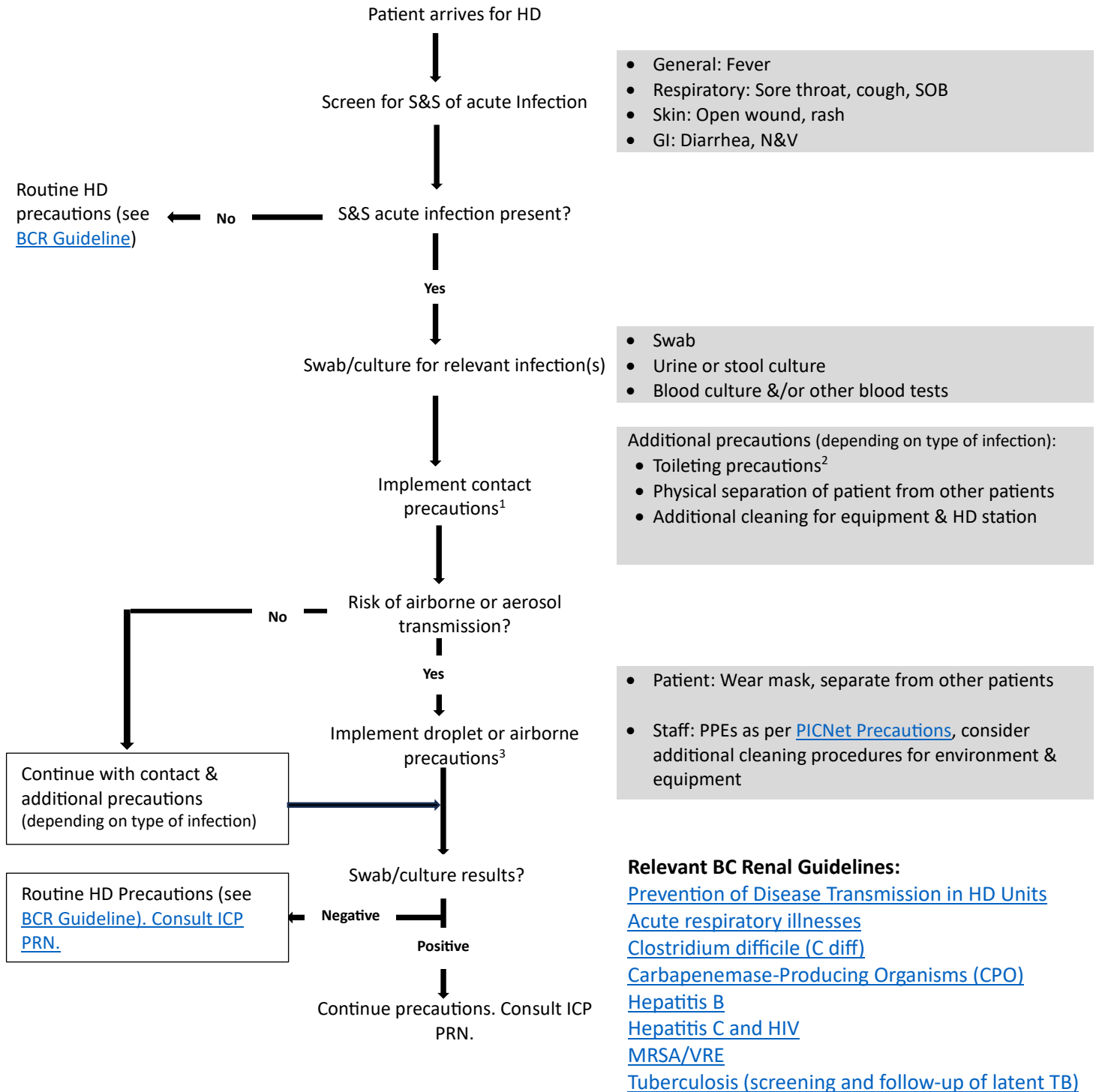


## Screening for Acute Infections on the Hemodialysis Unit

Approved by BC Hemodialysis Committee January 2024 and BC Renal Medical Advisory Group in May 2024



## Notes for Table:

### <sup>1</sup> Contact precautions:

Refer to: [www.picnet.ca/wp-content/uploads/PrecautionSigns\\_PICNet.pdf](http://www.picnet.ca/wp-content/uploads/PrecautionSigns_PICNet.pdf) (page 1). While contact and contact plus precautions are similar to routine practices, contact precautions require PPE's to be worn on each contact with the patient or their environment. Routine practices limit the precautions to specific times when direct care is being provided, based upon risk assessment.

### <sup>2</sup> Toileting precautions (preferred order):

- Assign to dedicated toilet or commode, if available.
- Utilize reusable bedpan/urinal & disinfect with bedpan washer/disinfectant.
- Utilize disposable bedpan/urinal & macerate after use.
- Assign shared patient washroom on HD unit (with strict instruction re hand hygiene).  
Housekeeping to clean after each use. If housekeeping not available, dialysis-trained staff to clean "high touch" areas using disinfectant wipes (1 wipe per area): toilet seat, flusher handle, toilet lid, sink (taps, spout and sink), light switch & door handle.

### <sup>3</sup> Droplet & Airborne Precautions:

Refer to: [www.picnet.ca/wp-content/uploads/PrecautionSigns\\_PICNet.pdf](http://www.picnet.ca/wp-content/uploads/PrecautionSigns_PICNet.pdf) (pages 4 & 6).

- Droplet precautions: Require staff to wear a procedure mask with eye protection when within 2 metres of patient and  $\geq 2$  metres between patients. Private room preferred.
- Airborne precautions: Require staff to wear an N95 respiratory mask and the patient to be in a private negative pressure room.

#### IMPORTANT INFORMATION

This BC Renal guideline/resource was developed to support equitable, best practice care for patients with chronic kidney disease living in BC. The guideline/resource promotes standardized practices and is intended to assist renal programs in providing care that is reflected in quality patient outcome measurements. Based on the best information available at the time of publication, this guideline/resource relies on evidence and avoids opinion-based statements where possible; refer to [www.bcrenalagency.ca](http://www.bcrenalagency.ca) for the most recent version.

**For information about the use and referencing of BC Renal guidelines/resources, refer to <http://bit.ly/28SFr4n>.**